



South Africa

Prevention service packages and delivery platforms: sex workers and adolescent girls & young women

Dr Sandile Buthelezi

21 July 2018



Presentation Overview

- Context
- Instructive policies and guidelines
- Sex Workers
 - Service Package
 - Models of service delivery
- Adolescent girls and young women
 - Service Package
 - Service delivery platforms



Context

- Approximately 7.9 million people of all ages (0+ years) were living with HIV (PLHIV) in South Africa in 2017*.
- HIV prevalence among adults aged 15 to 49 years in South Africa is 20.6 percent; 26.3 percent among females and 14.8 percent among males*.

Sex Workers

- There are ~153 000 sex workers in the country (138 000 are female)
- HIV prevalence ranges from 40%-88%
- Sex workers and their clients account for upwards of 6% of all new HIV infections in the country

Adolescent girls and young women

- Every week in South Africa ~1300 AGYW are newly infected with HIV
- Disparity in HIV prevalence by sex is most pronounced among young adults: HIV prevalence among 20 to 24 year-olds is three times higher among females (15.6%) than males (4.8%)*

Instructive policies and guidelines

LET OUR ACTIONS COUNT

SOUTH AFRICA'S NATIONAL STRATEGIC PLAN FOR HIV, TB and STIs 2017-2022



1



*"I am calling for 2000 men to join me in getting circumcised so we can minimise the risk of HIV and STI infection."
— Kgiso Modupe, Brothers for Life Ambassador*

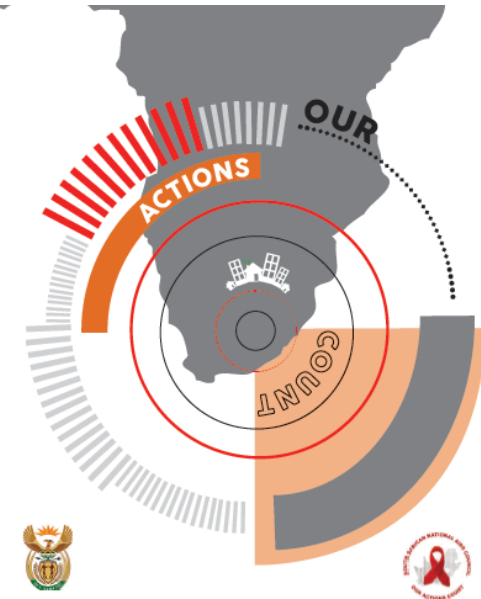
Goal 1:



Accelerate prevention to reduce new HIV and TB infections and STIs

"Breaking the Cycle of Transmission"

South African National Strategic Plan for HIV, TB and STIs 2017-2022 13



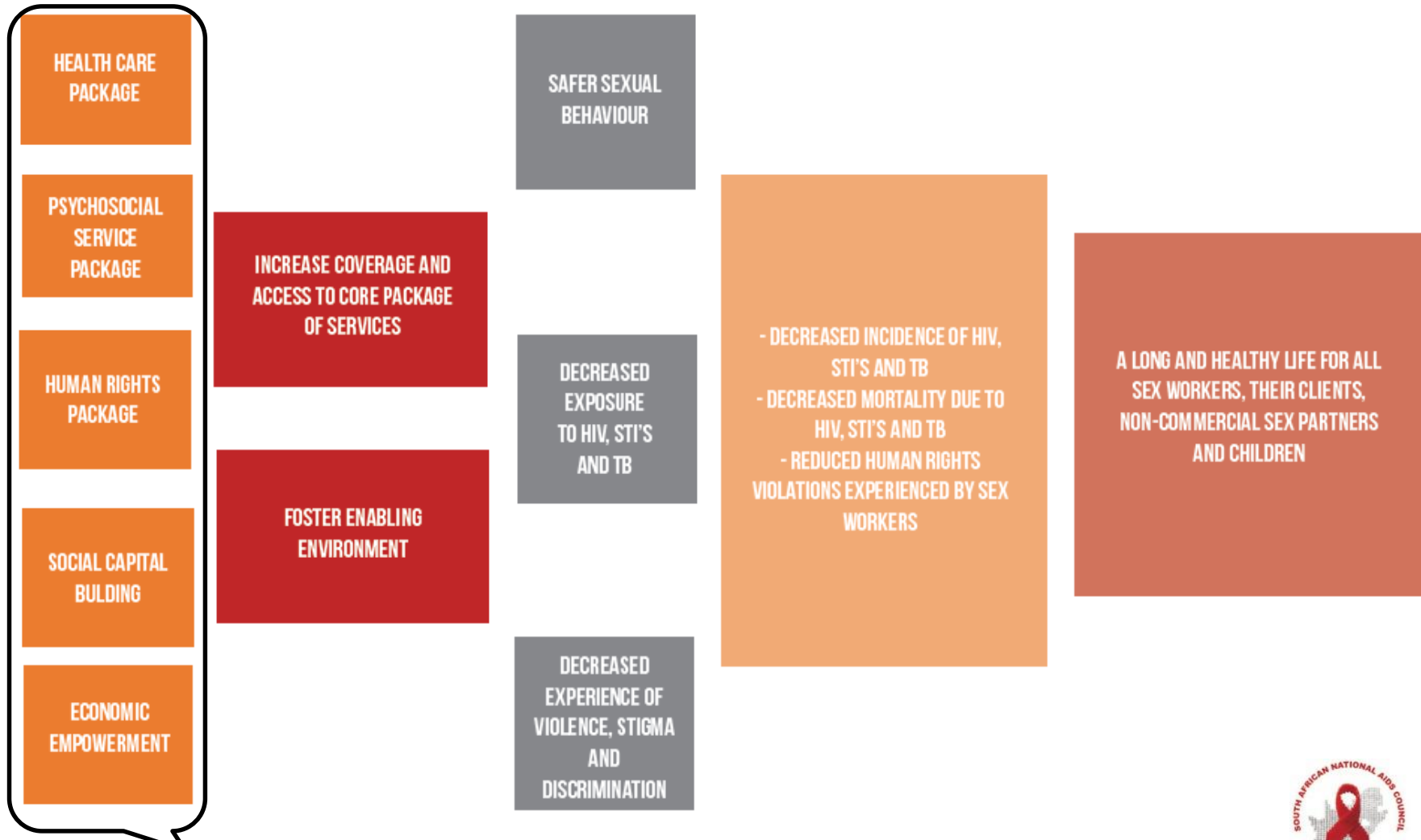
THE SOUTH AFRICAN NATIONAL SEX WORKER HIV PLAN
2016 | 2019



she conquers
Empower. Protect. Advance

Sex Workers: package of services

PEER EDUCATION



The programme utilises a comprehensive combination prevention approach to sex workers using a peer education approach



Sex Workers: model of service delivery

A 3-tiered delivery approach is proposed, supported by peer educators based on the density of sex workers in the given area:

Tier 1 (<500 sex workers per district): mobile services delivered at hotspots and on streets where sex workers operate, supported by outreach teams

- Outreach teams consist of sex worker peer educators and clinical staff (as necessary)
- Prevention, screening and treatment are delivered at the hotspots

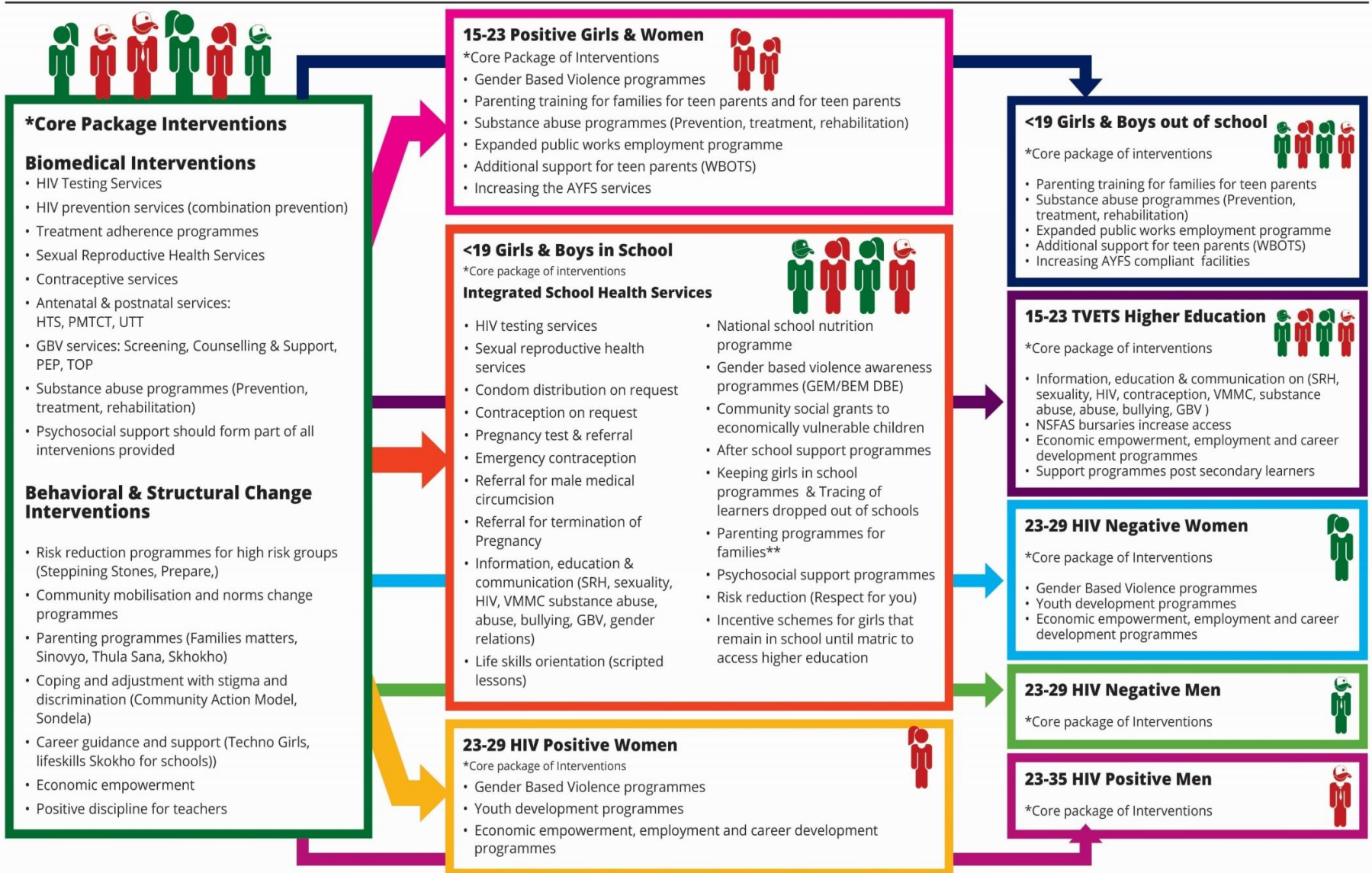
Tier 2 (>3000 sex workers per district): dedicated key populations clinics offering dedicated sex worker services

- Flexible working hours to accommodate sex worker activities and risk
- Emergency PEP, family planning, emergency contraception, rape services

Tier 3 (500-3000 sex workers per district): combination of mobile services; fixed clinic services and outreach teams



Adolescent Girls and Young Women: Core Package of Interventions



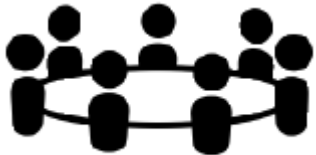
Adolescent Girls and Young Women: Service Delivery Platforms



Schools



Tertiary institutions



Communities



Health facilities

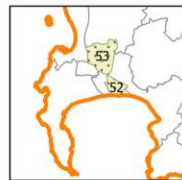
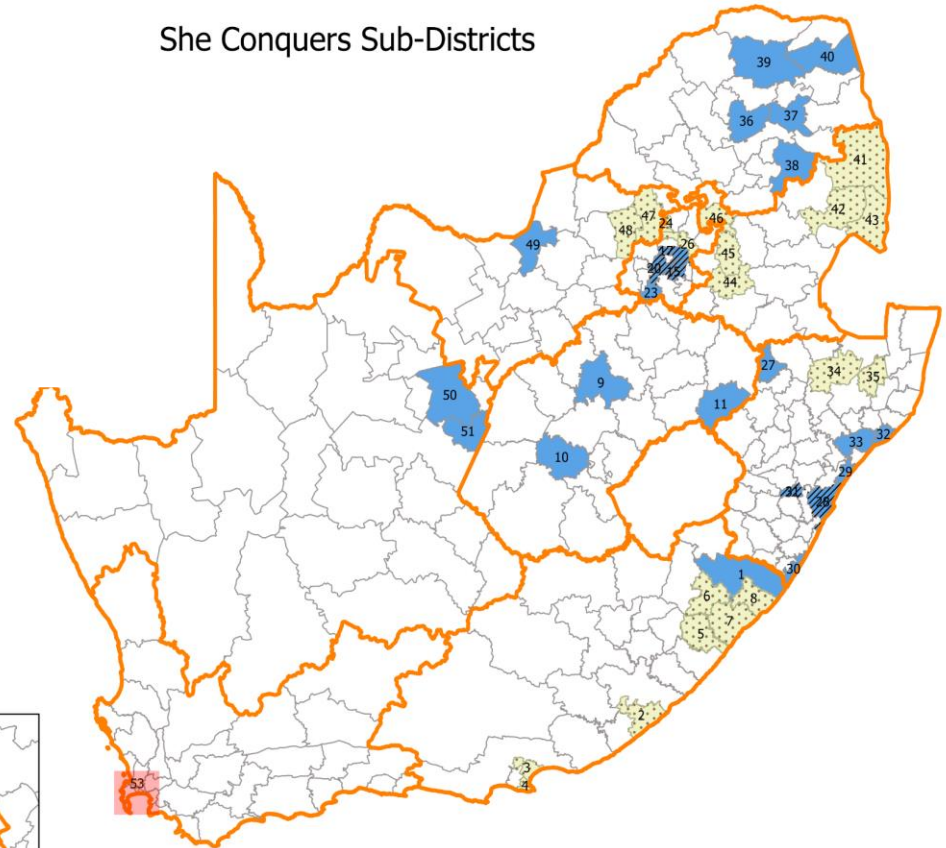


Safe spaces

Implementation leverages on existing government and donor-funded service delivery platforms for AGYW, linked to the population sub-groups including male sex partners

- She Conquers has been rolled out in way which focuses for impact
- 22 priority sub-districts have been prioritized for implementation*

She Conquers Sub-Districts



*algorithm included: population size, teen pregnancy rates, HIV prevalence, #PLHIV, levels of school drop out & experiences of SGBV



Thank You

ZERO

new HIV and TB infections

ZERO

new infections due to vertical transmission

ZERO

preventable HIV and TB deaths

ZERO

HIV and TB discrimination