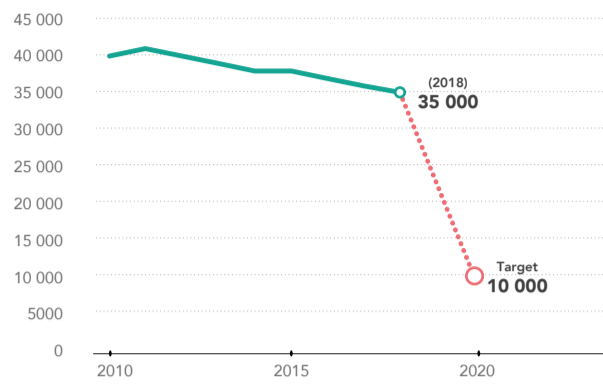


THE STATE OF PREVENTION IN MALAWI 2019

New HIV infections among adults aged 15+

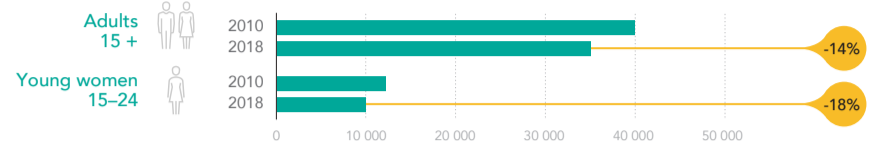


New HIV infections declined by **14%** which is too slow to achieve the 2020 targets. Integrated programme scale-up is needed.



GLOBAL TARGET **-75%**

New HIV infections



HIV prevalence among young people (%)



ADOLESCENT GIRLS, YOUNG WOMEN & MALE PARTNERS

Condom use with a non-regular partner among young people (%)

Young women: 53 | Young men: 77 | Target: 90%

26% of priority locations have adolescent girls and young women programs.

3

SEX WORKERS

Condom use at last paid sex (%)

Sex workers: 65 | Clients: 75 | Target: 95%

68% received two interventions in past 3 months.

6

GAY MEN & OTHER MEN WHO HAVE SEX WITH MEN

Condom use at last anal sex (%)

Gay men and other men who have sex with men: 44 | Target: 90%

65% received two interventions in past 3 months.

5

PEOPLE WHO INJECT DRUGS

Condom use with a non-regular partner

With safe injections: Insufficient data | On OST: Target: 40%

61% condom distribution need met.

6

CONDOMS

Condom use with a non-regular partner

Women 15-49: 50 | Men 15-49: 76 | Target: 90%

33% annual voluntary medical male circumcision target achieved.

3

VOLUNTARY MEDICAL MALE CIRCUMCISION

Uptake of voluntary medical male circumcision

% of 2020 target achieved: 15 | Male circumcision prevalence 15-24: 29 | Target: 90%

300 people used oral PrEP at least once during the past 12 months.

3

PRE-EXPOSURE PROPHYLAXIS

Composite PrEP preparedness score (0-10)

Score: 3

3

ANTIRETROVIRAL TREATMENT

People Living with HIV virally suppressed

69 | Target: 73%

3

Country messages: Eight of Malawi's 11 high HIV prevalence districts offer interventions for adolescent girls and young women. Significant investment is needed to improve coverage.

Malawi has yet to commence national scale-up of interventions for sex workers. Currently, the only implementation projects are being conducted by partners.

Stigma and discrimination constitute a strong barrier for gay men and other men who have sex with men, and a positive legal framework is critical for programme scale-up.

Due to the large number of people who use drugs in Malawi, the country is planning a situation analysis.

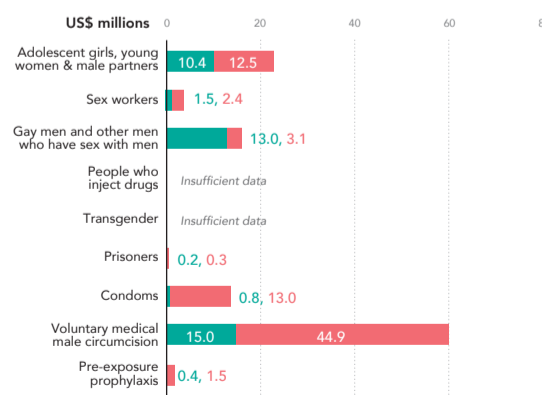
Male and female condoms must be prioritized, and investment needs to be increased. Comprehensive, gender-sensitive demand generation requires scale-up, and the supply chain system must be strengthened.

VMMC is still implemented as a project, not a programme. It is imperative that VMMC is institutionalized in the public health system, although human resource limitations pose a challenge.

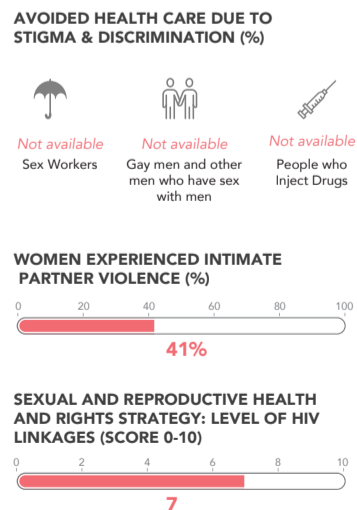
The country just concluded the pilot phase for PrEP, and it has yet to transition to a national programme.

Scores (0-10): Very good (green), Good (light green), Medium (yellow), Low (orange), Very low (red).

Estimated HIV prevention financing and gaps



Enablers & systems



Status of 10 Roadmap actions

Action	Baseline	2019
1 - Needs assessment	Not done	Done
2 - Prevention targets	Not done	Done
3 - Prevention strategy	Not done	Done
4 - Policy reform	Not done	Done
5a - Key populations size estimates	Not done	Done
5b - Defined key populations package	Not done	Done
5c - Adolescent girls and young women size estimates	Not done	Done
5d - Adolescent girls and young women package	Not done	Done
6 - Capacity & technical assistance plan	Not done	Done
7 - Social contracting	Not done	Done
8 - Financial gap analysis	Not done	Done
9 - Strengthen monitoring	Not done	Done
10 - Performance review	Not done	Done



NEXT STEPS:

- > Develop a consolidated capacity-building and technical assistance plan.
- > Convene national social contracting dialogue sessions.
- > Convene a national symposium on HIV prevention financing.