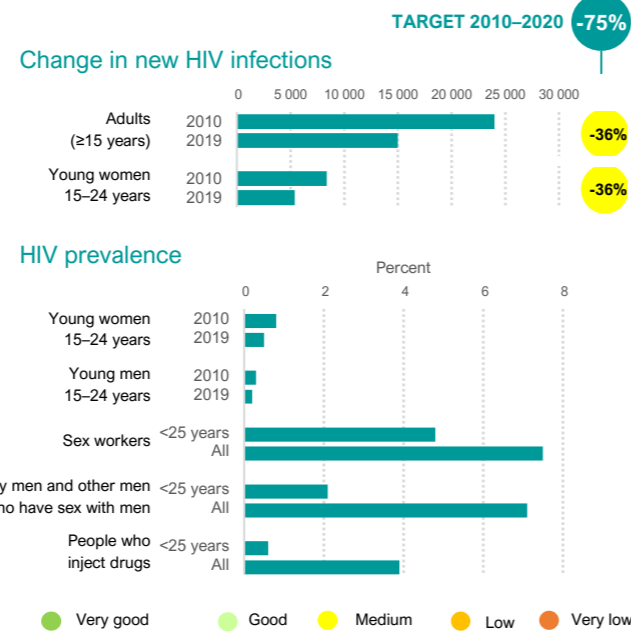
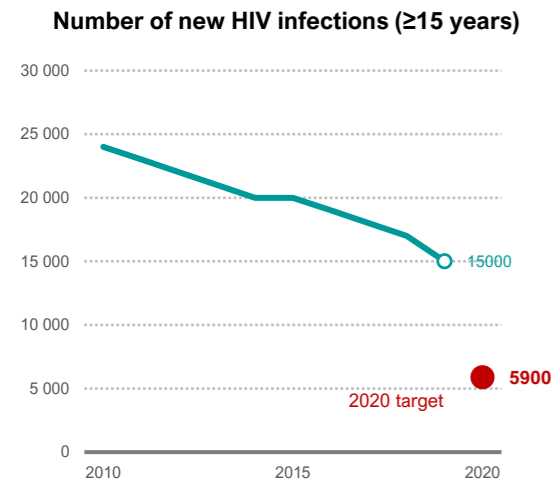


# THE STATE OF HIV PREVENTION IN THE DEMOCRATIC REPUBLIC OF THE CONGO

2020

The number of adults newly infected with HIV declined from 24000 in 2010 to 15000 in 2019, a 36% decline.



## Policy and structural barriers

### Key populations

Barrier	Sex workers	Gay men & other men who have sex with men	People who inject drugs
Criminalization of the behaviour of key populations	Partial	No	No
The national strategy includes critical elements of the programme package for key populations	All	> Half	Some
Avoided health care because of stigma and discrimination	id	id	id

### Adolescent girls and young women

Indicator	15-19 years	15-49 years
Proportion of women who experienced intimate partner violence	id	37%
Girls who completed lower secondary education	49%	id
Policies on life skills-based HIV and sexuality education (secondary schools)	id	id
Laws requiring parental consent for adolescents to access sexual and reproductive health services	id	id

## HIV prevention adaptations during COVID-19

Adaptation	Safe continuation of outreach	Online counselling
Young women Key populations	Yes	Yes
Adopted multi-month dispensing	Yes	Expanded alternative access
Condoms	Yes	Yes
PrEP	Yes	Yes
HIV treatment	Yes	Yes
Safe injecting equipment	Yes	id
Opioid substitution therapy (take home dosages)	id	Yes

Note: 'Yes' refers to the adaptation having been introduced (not necessarily it being universally available).

## Linkages between HIV and sexual and reproductive health services

Service	Linkage
HIV testing services integrated within sexual and reproductive health	id
Provider-initiated condom promotion in family planning services	No/id

## HIV programme coverage and outcomes

### ADOLESCENT GIRLS, YOUNG WOMEN & MALE PARTNERS

Condom use with a non-regular partner among young people 15-24 years old (%)

Group	Condom use (%)	Target (%)
Young women	24	90%
Young men	31	90%

Received two prevention interventions in past 3 months (%)

Score: 4

### KEY POPULATIONS

Condom use at last paid sex (%)

Group	Condom use (%)	Target (%)
Sex workers	74	95%
Clients	34	95%

Received two prevention interventions in past 3 months (%)

Score: id

### CONDOM PROGRAMMING

Condom use with a non-regular partner, 15-49 years (%)

Group	Condom use (%)	Target (%)
Women	23	90%
Men	34	90%

Estimated condom distribution need met (%)

Score: 3

### VOLUNTARY MEDICAL MALE CIRCUMCISION

Uptake of voluntary medical male circumcision

Category	Value (%)	Target (%)
% of 2020 target achieved	97	90%

% of annual voluntary medical male circumcision target achieved

Score: na

### ANTIRETROVIRAL DRUG-BASED PREVENTION

Pre-exposure prophylaxis

Year	Number of PrEP users
2018	400
2019	356
2020	356

Annual change (2019-20) in users of PrEP

Score: 3

### ANTIRETROVIRAL TREATMENT

Antiretroviral treatment coverage

Group	Coverage (%)	Target (%)
Overall*	61%	73%
Sex workers	id	
MSM	id	
PWID	id	

Score: id

## Implementation of Prevention 2020 Roadmap

Ten actions	2017	2020
1 - HIV prevention needs assessment	Not done	Done
2 - HIV prevention targets	Done	Done
3 - HIV prevention strategy	Done	Done
4 - Legal and policy reform	Not done	Done
5a - Key population size estimates	Not done	Partly done
5b - Defined key population package	Not done	Done
5c - Adolescent girls and young women size estimates	Not done	Done
5d - Adolescent girls and young women package	Not done	Done
6 - Capacity development and technical assistance plan	Not done	Done
7 - Social contracting	Not done	Done
8 - HIV prevention financial gap analysis	Not done	Done
9 - Strengthen programme monitoring	Not done	Done
10 - Performance review	Not done	Done

Scores (1-10) ● Very good ● Good ● Medium ● Low ● Very low id ... insufficient data na ... not applicable

Data sources: UNAIDS 2020 HIV estimates; Global AIDS Monitoring 2020; Global HIV Prevention Coalition progress survey 2020; and ICF - the DHS Program STATcompiler. Data sources key populations coverage: Global AIDS Monitoring 2020, Global Fund Proposals 2020 and PEPFAR COP20. Note: the 2020 HIV estimates presented are for 2019. Other data points may refer to various years when the surveys were conducted.