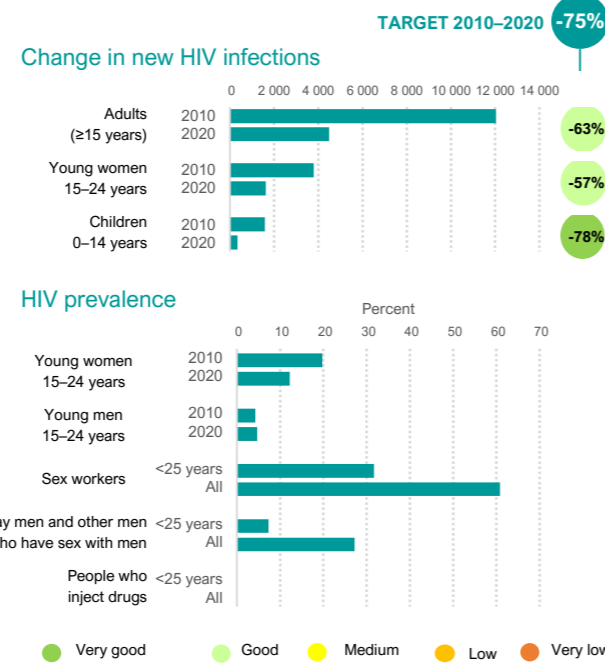
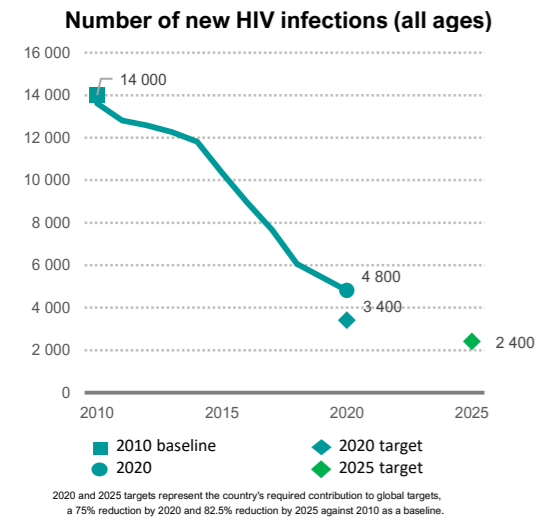


The State of HIV Prevention in Eswatini

2021

The number of people newly infected with HIV declined from 14000 in 2010 to 4800 in 2020, a 64% decline.



Policy and structural barriers

Key populations

	Sex workers	Gay men & other MSM	People who inject drugs	Trans-gender people	Prisoners
Criminalization of the behaviour of key populations	Yes	Yes	Yes	No	na
The national strategy includes critical elements of the programme package for key populations	< Half	< Half	None	id	Some
Avoided health care because of stigma and discrimination	id	id	id	id	na
Population size	4 000	2 400	300	id	46 800

Adolescent girls and young women

	15-19 years	15-49 years
Proportion of women who experienced intimate partner violence	id	id
Girls who completed lower secondary education	54%	
Policies on life skills-based HIV and sexuality education (secondary schools)	Yes	
Laws requiring parental consent for adolescents to access HIV testing services, age of consent	Yes, <12	

HIV prevention adaptations during COVID-19

	Safe continuation of outreach	Online counselling
Young women	Yes	No
Key populations	No	No
Adopted multi-month dispensing	Yes	Expanded alternative access
Condoms	Yes	Yes
PrEP	Yes	No
HIV treatment	Yes	No
Safe injecting equipment	No	
Opioid substitution therapy (take home dosages)		NO

Note: 'Yes' refers to the adaptation having been introduced (not necessarily it being universally available).

Linkages between HIV and sexual and reproductive health services

HIV testing services integrated within sexual and reproductive health	Yes
Provider-initiated condom promotion integrated into sexual and reproductive health services	No/id

HIV programme coverage and outcomes

ADOLESCENT GIRLS, YOUNG WOMEN & MALE PARTNERS

Condom use with a non-regular partner among young people 15-24 years old (%)

54 (Young women), 70 (Young men) | Target 90%

76 % of high-incidence locations with a programme for adolescent girls & young women

7

KEY POPULATIONS

Sex workers

Condom use at last paid sex (%)

50 (Sex workers), 95 (Clients) | Target 95%

2

Gay men and other men who have sex with men

Condom use at last anal sex (%)

80 | Target 90%

9

People who inject drugs

Use of harm reduction services (%)

40 | Target 95%

6

CONDOM PROGRAMMING

Condom use with a non-regular partner, 15-49 years (%)

54 (Women), 67 (Men) | Target 90%

7

86 Estimated condom distribution need met (%)

7

VOLUNTARY MEDICAL MALE CIRCUMCISION

Uptake of voluntary medical male circumcision

39 (% of 2020 target achieved), 5 (Male circumcision prevalence, 15-24)

24 % of annual voluntary medical male circumcision target achieved

3

ANTIRETROVIRAL DRUG-BASED PREVENTION

Pre-exposure prophylaxis

Number of people actively taking Pre-Exposure Prophylaxis (PrEP)

300 (2017), 2176 (2018), 5607 (2019), 9125 (2020)

+63% Change in use of PrEP (July-December 2020)

8

Antiretroviral treatment

People living with HIV virally suppressed

98 (Women), 89 (Men) | Target 73%

10

PREVENTION OF VERTICAL TRANSMISSION OF HIV

MTCT rate (2020): 4%

95% % of HIV-positive pregnant women receiving ART (2020)

9 300 Number of Estimated births to women living with HIV (2020)

350 Number of new child infections due to vertical transmission (2020)

9

Scores (1-10) ● Very good ● Good ● Medium ● Low ● Very low

id ... insufficient data na ... not applicable

Data sources: UNAIDS 2021 epidemiological estimates; Global AIDS Monitoring 2021; and ICF - the DHS Program STATcompiler. Data sources key populations coverage: Global AIDS Monitoring 2021, Global Fund and PEPFAR reports obtained in 2021. Note: the zuz1 epidemiological estimates presented are for zuzu. Umer data points may refer to various years when the surveys were conducted.

2020 and 2025 targets represent the country's required contribution to global targets, a 75% reduction by 2020 and 82.5% reduction by 2025 against 2010 as a baseline.