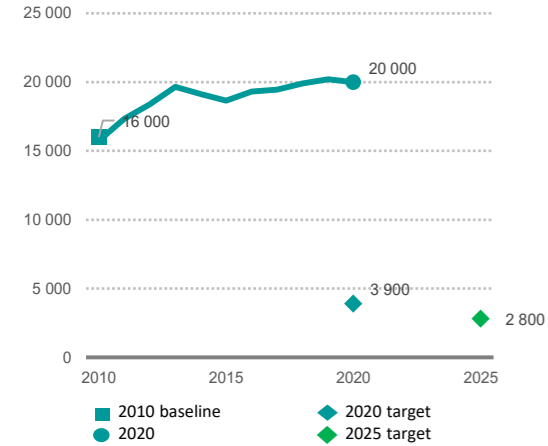


The State of HIV Prevention in Mexico

2021

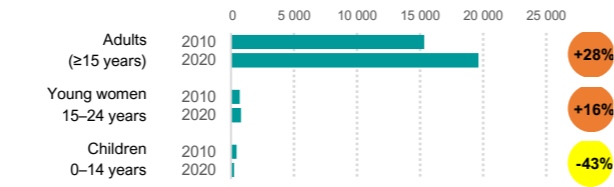
The number of people newly infected with HIV increased from 16000 in 2010 to 20000 in 2020, a 26% increase.

Number of new HIV infections (all ages)

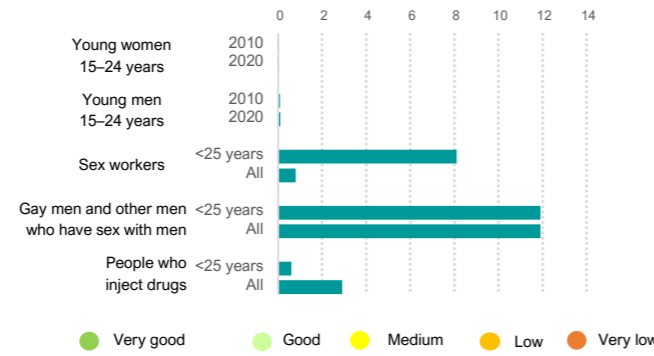


2020 and 2025 targets represent the country's required contribution to global targets, a 75% reduction by 2020 and 82.5% reduction by 2025 against 2010 as a baseline.

Change in new HIV infections TARGET 2010-2020 -75%



HIV prevalence



Policy and structural barriers

Key populations

	Sex workers	Gay men & other MSM	People who inject drugs	Trans-gender people	Prisoners
Criminalization of the behaviour of key populations	No	No	No	No	na
The national strategy includes critical elements of the programme package for key populations	> Half	> Half	All	id	Some
Avoided health care because of stigma and discrimination	id	id	id	id	na
Population size	240 000	1 200 000	109 100	123 000	200 000

HIV prevention adaptations during COVID-19

	Safe continuation of outreach	Online counselling
Key populations	Yes	No
Adopted multi-month dispensing	Yes	Expanded alternative access
Condoms	Yes	Yes
PrEP	Yes	No
HIV treatment	Yes	No
Safe injecting equipment	No	No
Opioid substitution therapy (take home dosages)	No	No

Note: 'Yes' refers to the adaptation having been introduced (not necessarily it being universally available).

Linkages between HIV and sexual and reproductive health services

HIV testing services integrated within sexual and reproductive health	Partial
Provider-initiated condom promotion integrated into sexual and reproductive health services	No/id

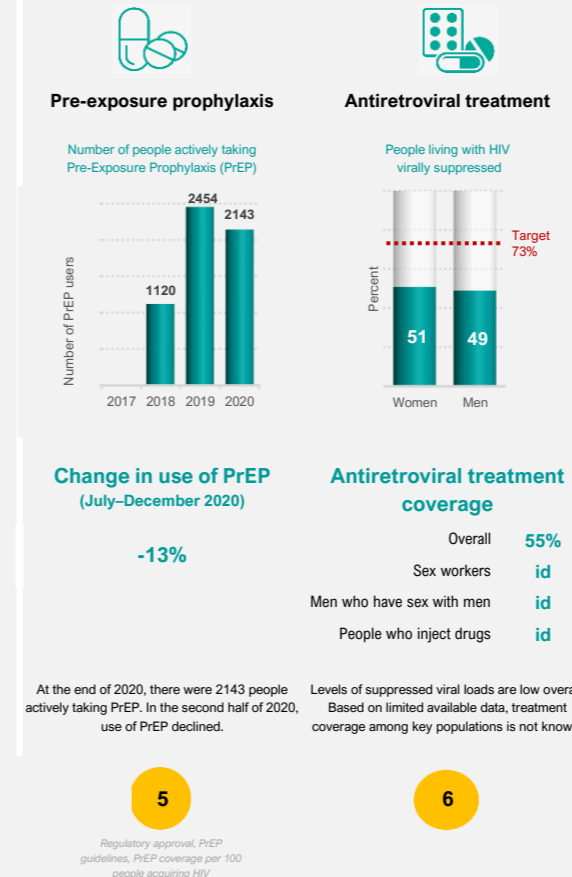
HIV programme coverage and outcomes

KEY POPULATIONS



Scores (1-10) Very good Good Medium Low Very low id ... insufficient data na ... not applicable

ANTIRETROVIRAL DRUG-BASED PREVENTION



Data sources: UNAIDS 2021 epidemiological estimates; Global AIDS Monitoring 2021; and ICF - the DHS Program STATcompiler.

Data sources key populations coverage: Global AIDS Monitoring 2021, Global Fund and PEPFAR reports obtained in 2021

Note: the 2021 epidemiological estimates presented are for 2020. Other data points may refer to various years when the surveys were conducted.

2020 and 2025 targets represent the country's required contribution to global targets, a 75% reduction by 2020 and 82.5% reduction by 2025 against 2010 as a baseline.