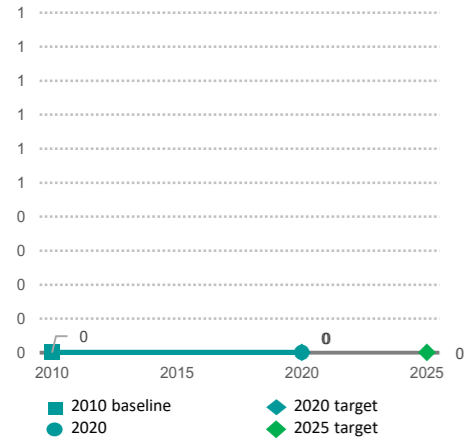


The State of HIV Prevention in Myanmar

2021

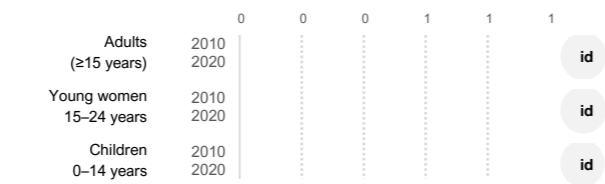
Estimates for new HIV infections are not available in 2020.

Number of new HIV infections (all ages)

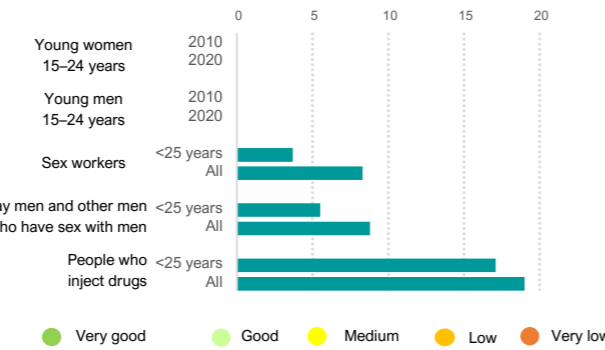


2020 and 2025 targets represent the country's required contribution to global targets, a 75% reduction by 2020 and 82.5% reduction by 2025 against 2010 as a baseline.

Change in new HIV infections



HIV prevalence



Policy and structural barriers

Key populations

Barrier	Sex workers	Gay men & other MSM	People who inject drugs	Trans-gender people	Prisoners
Criminalization of the behaviour of key populations	Yes	Yes	Yes	Yes	na
The national strategy includes critical elements of the programme package for key populations	All	All	Some	id	id
Avoided health care because of stigma and discrimination	id	id	id	id	na
Population size	66 000	252 000	93 000	id	id

HIV prevention adaptations during COVID-19

Adaptation	Safe continuation of outreach	Online counselling
Key populations	Yes	Yes
Adopted multi-month dispensing	Yes	Expanded alternative access
Condoms	Yes	Yes
PrEP	No	No
HIV treatment	Yes	Yes
Safe injecting equipment	Yes	Yes
Opioid substitution therapy (take home dosages)	Yes	Yes

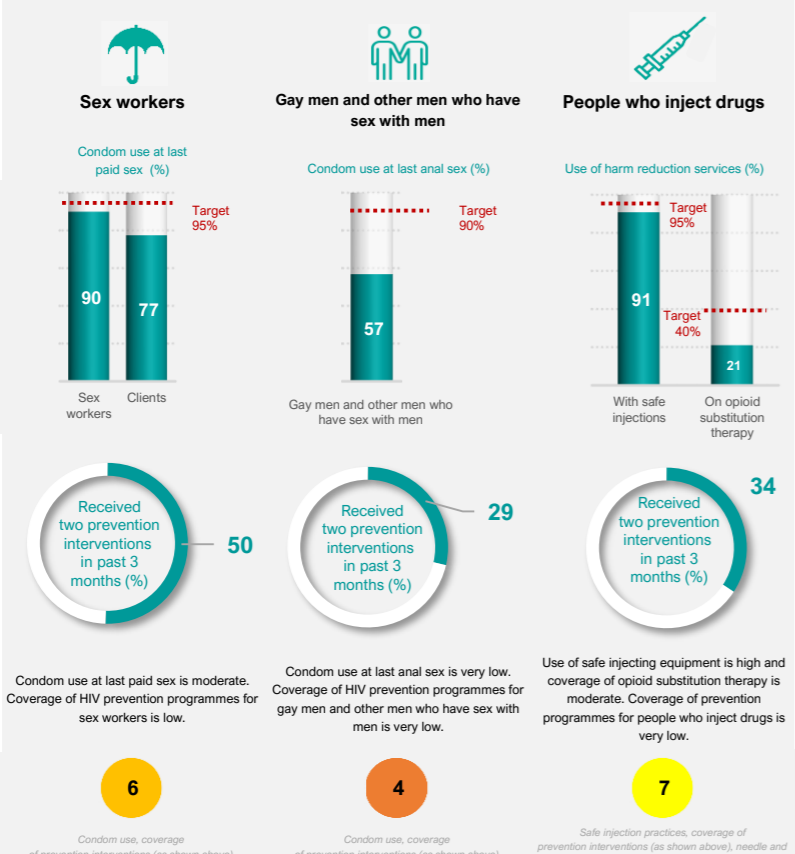
Note: 'Yes' refers to the adaptation having been introduced (not necessarily it being universally available).

Linkages between HIV and sexual and reproductive health services

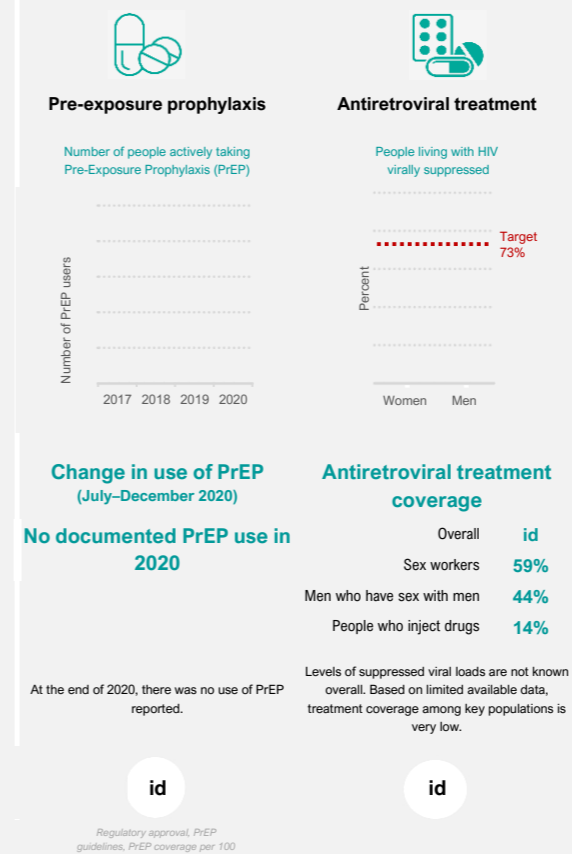
HIV testing services integrated within sexual and reproductive health	Partial
Provider-initiated condom promotion integrated into sexual and reproductive health services	No/id

HIV programme coverage and outcomes

KEY POPULATIONS



ANTIRETROVIRAL DRUG-BASED PREVENTION



Scores (1-10) ● Very good ● Good ● Medium ● Low ● Very low id ... insufficient data na ... not applicable

Data sources: UNAIDS 2021 epidemiological estimates; Global AIDS Monitoring 2021; and ICF - the DHS Program STATcompiler. Data sources key populations coverage: Global AIDS Monitoring 2021, Global Fund and PEPFAR reports obtained in 2021. Note: the zuz1 epidemiological estimates presented are for zuzu. Umer data points may refer to various years when the surveys were conducted.

2020 and 2025 targets represent the country's required contribution to global targets, a 75% reduction by 2020 and 82.5% reduction by 2025 against 2010 as a baseline.