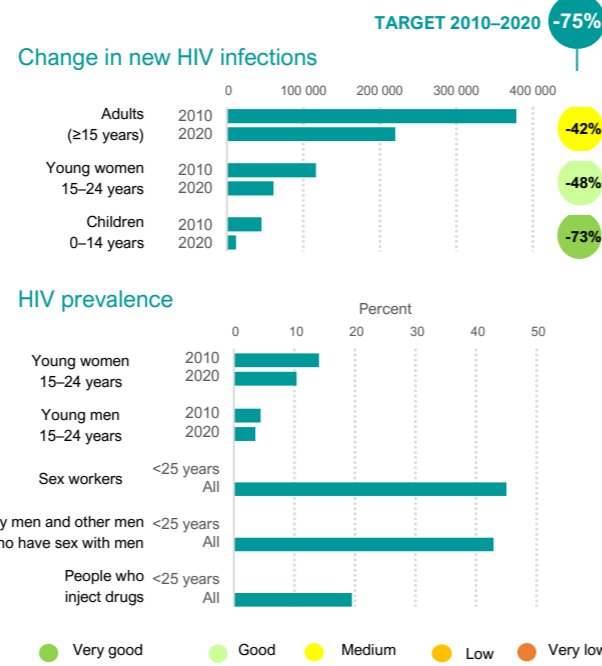
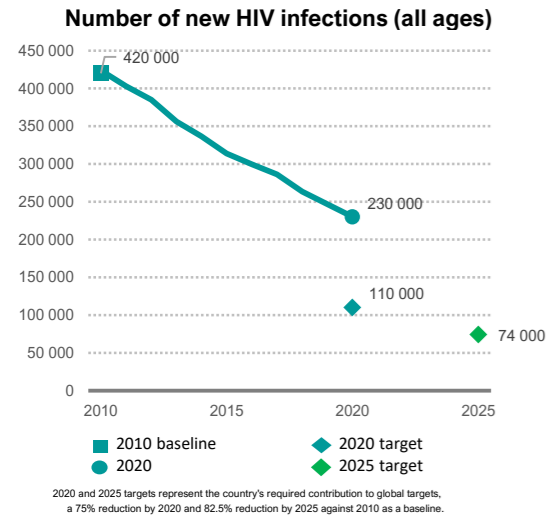


The State of HIV Prevention in South Africa

2021

The number of people newly infected with HIV declined from 420000 in 2010 to 230000 in 2020, a 45% decline.



Policy and structural barriers

Key populations

| Barrier | Sex workers | Gay men & other MSM | People who inject drugs | Trans-gender people | Prisoners |
|---|-------------|---------------------|-------------------------|---------------------|-----------|
| Criminalization of the behaviour of key populations | Yes | No | Yes | No | na |
| The national strategy includes critical elements of the programme package for key populations | > Half | > Half | All | id | Some |
| Avoided health care because of stigma and discrimination | id | id | id | id | na |
| Population size | 24 000 | 309 700 | 82 500 | id | 166 400 |

Adolescent girls and young women

| Barrier | 15-19 years | 15-49 years |
|--|-------------|-------------|
| Proportion of women who experienced intimate partner violence | 30% | 30% |
| Girls who completed lower secondary education | 91% | |
| Policies on life skills-based HIV and sexuality education (secondary schools) | Yes | |
| Laws requiring parental consent for adolescents to access HIV testing services, age of consent | Yes, <12 | |

HIV prevention adaptations during COVID-19

| Adaptation | Safe continuation of outreach | Online counselling |
|---|-------------------------------|-----------------------------|
| Young women | Yes | Yes |
| Key populations | Yes | Yes |
| Adopted multi-month dispensing | Yes | Expanded alternative access |
| Condoms | Yes | Yes |
| PrEP | Yes | Yes |
| HIV treatment | Yes | Yes |
| Safe injecting equipment | Yes | |
| Opioid substitution therapy (take home dosages) | | Yes |

Note: 'Yes' refers to the adaptation having been introduced (not necessarily it being universally available).

Linkages between HIV and sexual and reproductive health services

| | |
|---|-----|
| HIV testing services integrated within sexual and reproductive health | Yes |
| Provider-initiated condom promotion integrated into sexual and reproductive health services | Yes |

HIV programme coverage and outcomes

ADOLESCENT GIRLS, YOUNG WOMEN & MALE PARTNERS

Condom use with a non-regular partner among young people 15-24 years old (%)

Young women: 61, Young men: 73. Target: 90%

29% of high-incidence locations with a programme for adolescent girls & young women

Score: 5

KEY POPULATIONS

Sex workers

Condom use at last paid sex (%): 86 (Sex workers), 83 (Clients). Target: 95%

73% received two prevention interventions in past 3 months

Score: 8

Gay men and other men who have sex with men

Condom use at last anal sex (%): 72. Target: 90%

25% received two prevention interventions in past 3 months

Score: 5

People who inject drugs

Use of harm reduction services (%): 17. Target: 95%

17% received two prevention interventions in past 3 months

Score: 2

CONDOM PROGRAMMING

Condom use with a non-regular partner, 15-49 years (%)

Women: 58, Men: 65. Target: 90%

65% estimated condom distribution need met

Score: 6

VOLUNTARY MEDICAL MALE CIRCUMCISION

Uptake of voluntary medical male circumcision

% of 2020 target achieved: 54, Male circumcision prevalence: 60. Target: 90%

19% of annual voluntary medical male circumcision target achieved

Score: 4

ANTIRETROVIRAL DRUG-BASED PREVENTION

Pre-exposure prophylaxis

Number of people actively taking Pre-Exposure Prophylaxis (PrEP): 8100 (2017), 42255 (2019), 106401 (2020)

+152% change in use of PrEP (July-December 2020)

Score: 6

Antiretroviral treatment

People living with HIV virally suppressed: 72% (Women), 58% (Men). Target: 73%

Antiretroviral treatment coverage: Overall 72%, Sex workers 47%, Men who have sex with men 69%, People who inject drugs 41%

Score: 7

PREVENTION OF VERTICAL TRANSMISSION OF HIV

MTCT rate (2020): 4%

95% of HIV-positive pregnant women receiving ART (2020)

310 000 Estimated births to women living with HIV (2020)

11 000 Number of new child infections due to vertical transmission (2020)

Score: 9

Scores (1-10): ● Very good, ● Good, ● Medium, ● Low, ● Very low

id ... insufficient data, na ... not applicable

Data sources: UNAIDS 2021 epidemiological estimates; Global AIDS Monitoring 2021; and ICF - the DHS Program STATcompiler. Data sources key populations coverage: Global AIDS Monitoring 2021, Global Fund and PEPFAR reports obtained in 2021. Note: the zuz1 epidemiological estimates presented are for zuzu. Umer data points may refer to various years when the surveys were conducted.

2020 and 2025 targets represent the country's required contribution to global targets, a 75% reduction by 2020 and 82.5% reduction by 2025 against 2010 as a baseline.