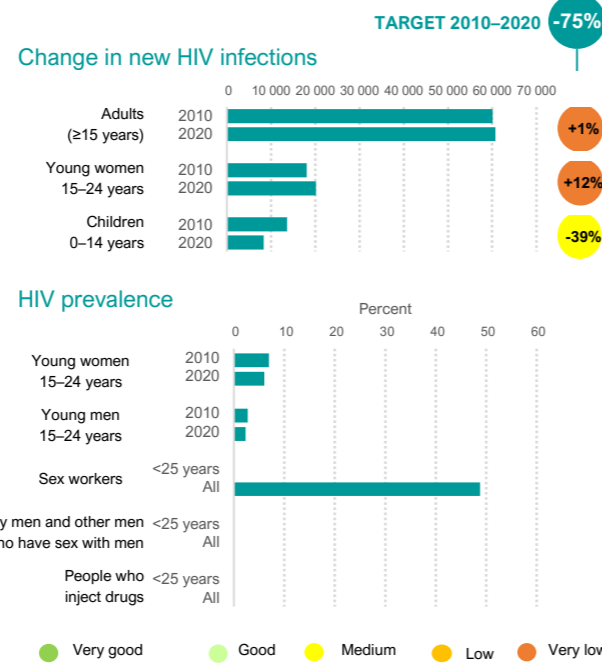
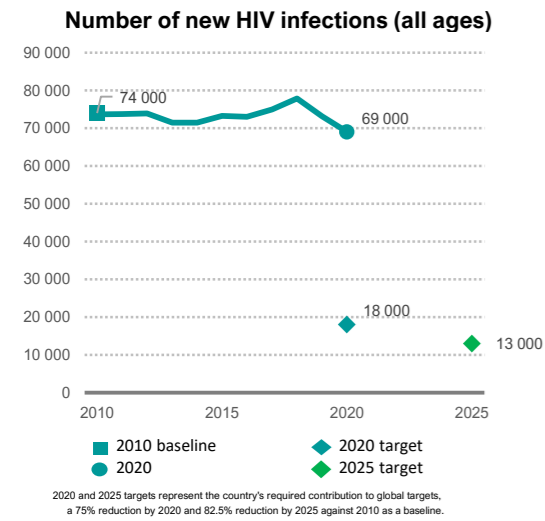


The State of HIV Prevention in Zambia

2021

The number of people newly infected with HIV declined from 74000 in 2010 to 69000 in 2020, a 6% decline.



Policy and structural barriers

Key populations

Barrier	Sex workers	Gay men & other MSM	People who inject drugs	Trans-gender people	Prisoners
Criminalization of the behaviour of key populations	Yes	Yes	Yes	Yes	na
The national strategy includes critical elements of the programme package for key populations	> Half	> Half	None	id	None
Avoided health care because of stigma and discrimination	id	id	id	id	na
Population size	126 000	6 500	26 800	4 000	20 800

Adolescent girls and young women

Indicator	15-19 years	15-49 years
Proportion of women who experienced intimate partner violence	25%	27%
Girls who completed lower secondary education	50%	
Policies on life skills-based HIV and sexuality education (secondary schools)	Yes	
Laws requiring parental consent for adolescents to access HIV testing services, age of consent	Yes, <16	

HIV prevention adaptations during COVID-19

Adaptation	Safe continuation of outreach	Online counselling
Young women	Yes	No
Key populations	Yes	No
Condoms	Yes	Yes
PrEP	Yes	No
HIV treatment	Yes	No
Safe injecting equipment	No	No
Opioid substitution therapy (take home dosages)	No	No

Note: 'Yes' refers to the adaptation having been introduced (not necessarily it being universally available).

Linkages between HIV and sexual and reproductive health services

HIV testing services integrated within sexual and reproductive health	Partial
Provider-initiated condom promotion integrated into sexual and reproductive health services	Yes

HIV programme coverage and outcomes

ADOLESCENT GIRLS, YOUNG WOMEN & MALE PARTNERS

Condom use with a non-regular partner among young people 15-24 years old (%)

34 (Young women), 49 (Young men) | Target 90%

19% of high-incidence locations with a programme for adolescent girls & young women

Score: 3

KEY POPULATIONS

Sex workers

Condom use at last paid sex (%)

79 (Sex workers), 56 (Clients) | Target 95%

36% received two prevention interventions in past 3 months

Score: 5

Gay men and other men who have sex with men

Condom use at last anal sex (%)

Target 90%

26% received two prevention interventions in past 3 months

Score: id

People who inject drugs

Use of harm reduction services (%)

Target 95%

4% received two prevention interventions in past 3 months

Score: 0

CONDOM PROGRAMMING

Condom use with a non-regular partner, 15-49 years (%)

35 (Women), 54 (Men) | Target 90%

11% estimated condom distribution need met

Score: 3

VOLUNTARY MEDICAL MALE CIRCUMCISION

Uptake of voluntary medical male circumcision

96% (2020 target achieved), 37% (Male circumcision prevalence, 15-24)

100% of annual voluntary medical male circumcision target achieved

Score: 10

ANTIRETROVIRAL DRUG-BASED PREVENTION

Pre-exposure prophylaxis

Number of people actively taking Pre-Exposure Prophylaxis (PrEP)

8991 (2017), 23250 (2018), 71000 (2019-2020)

+205% change in use of PrEP (July-December 2020)

Score: 8

Antiretroviral treatment

People living with HIV virally suppressed

78% (Women), 75% (Men) | Target 73%

81% overall coverage

Score: 8

PREVENTION OF VERTICAL TRANSMISSION OF HIV

MTCT rate (2020): 13%

80% of HIV-positive pregnant women receiving ART

62,000 estimated births to women living with HIV

8,300 new child infections due to vertical transmission

Score: 6

Scores (1-10) ● Very good ● Good ● Medium ● Low ● Very low

id ... insufficient data na ... not applicable

Data sources: UNAIDS 2021 epidemiological estimates; Global AIDS Monitoring 2021; and ICF - the DHS Program STATcompiler. Data sources key populations coverage: Global AIDS Monitoring 2021, Global Fund and PEPFAR reports obtained in 2021. Note: the zuz1 epidemiological estimates presented are for zuzu. Umer data points may refer to various years when the surveys were conducted.

2020 and 2025 targets represent the country's required contribution to global targets, a 75% reduction by 2020 and 82.5% reduction by 2025 against 2010 as a baseline.